







## Amwell End, Ware, SG12 9HW

Westwood Leber are delighted to bring to the market this exceptional two bedroom apartment located in the centre of Ware Town. This fabulous property benefits from large accommodation in excess of 900 sq feet with two beautiful balconies that offer generous outdoor space! The property features a large open plan lounge/luxury kitchen fully integrated with Neff appliances, two double bedrooms and two luxury bathrooms. Built only a few years ago. Astoria Place is located in the heart of Ware's town centre with access to all the town centre facilities together with a mainline station serving London's Liverpool Street just a short walk away. An internal viewing is highly recommended!

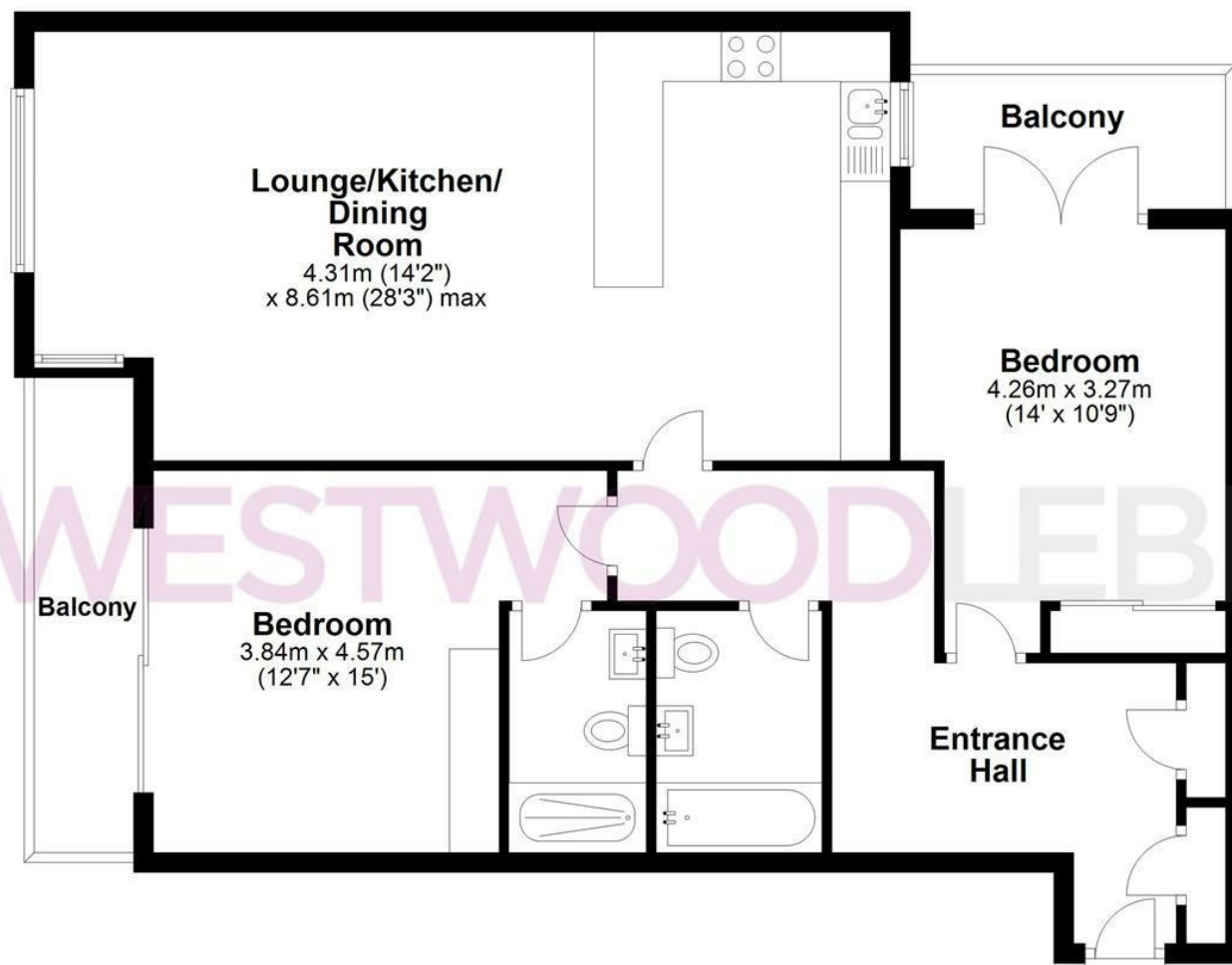






## Apartment

Approx. 87.6 sq. metres (942.7 sq. feet)



Total area: approx. 87.6 sq. metres (942.7 sq. feet)

THE FLOORPLAN IS FOR ILLUSTRATIVE PURPOSES ONLY AND IS NOT TO SCALE. Measurements and features are approximate and may differ from the actual property. Verify all details independently; no liability is accepted for errors or omissions.

Property marketing provided by [www.fotomarketing.co.uk](http://www.fotomarketing.co.uk)















